

Specifications

Model	Z-135/70	
Measurements	Metric	US
Working height maximum*	43.15 m	141 ft
Platform height maximum	41.15 m	135 ft
Horizontal reach max - riser extended	18.03 m	59 ft 2 in
Horizontal reach max - riser retracted	21.26 m	69 ft 9 in
Up and over clearance maximum -		
riser extended	23.01 m	75 ft 6 in
riser retracted	9.91 m	32 ft 6 in
Below ground reach	5.87 m	19 ft 3 in
A Platform length - 8 ft / 6 ft model	0.91 m / 0.76 m	3 ft / 2 ft 6 in
B Platform width - 8 ft / 6 ft model	2.44 m / 1.83 m	8 ft / 6 ft
C Height - stowed	3.07 m	10 ft 1 in
D Length - stowed	12.93 m	42 ft 5 in
E Width - axles extended	3.94 m	12 ft 11 in
Width - axles retracted	2.46 m	8 ft 1 in
F Wheelbase - axles extended	4.11 m	13 ft 6 in
Wheelbase - axles retracted	4.72 m	15 ft 6 in
G Ground clearance - center	0.51 m	1 ft 8 in

Productivity

Lift capacity	272 kg	600 lbs
Platform rotation	160°	160°
Vertical jib rotation	110°	110°
Turntable rotation	360° continuous	
Turntable tailswing - axles extended riser up	0.79 m	2 ft 7 in
Turntable tailswing - riser down	4.27 m	14 ft
Drive speed - stowed	4.8 km/h	3.0 mph
Drive speed - raised**	30 cm/s	1 ft/s
Lift speed to full height	93 sec	93 sec
Gradeability - stowed***	45%	45%
Inside turning radius - axles extended	2.29 m	7 ft 6 in
Inside turning radius - axles retracted	5.51 m	18 ft 1 in
Outside turning radius - axles extended	5.64 m	18 ft 6 in
Outside turning radius - axles retracted	7.77 m	25 ft 6 in
Controls	12 V DC proportional	
Tyres	445/65 D22.5 18 ply foam-filled	

Power

Power source	Deutz Diesel TD 2011 L04i 4-cylinder turbo diesel, 74 hp (55 kW) Perkins Diesel 804-33T 4-cylinder turbo diesel, 83 hp (62 kW)	
Auxiliary power unit	12 V DC	12 V DC
Hydraulic tank capacity	246.1 L	65 gal
Fuel tank capacity	151.4 L	40 gal

Sound & Vibration Levels

Sound pressure level (ground workstation)	85 dBA	85 dBA
Sound pressure level (platform workstation)	74 dBA	74 dBA
Vibration	<2.5 m/s ²	<8 ft 2 in/s ²

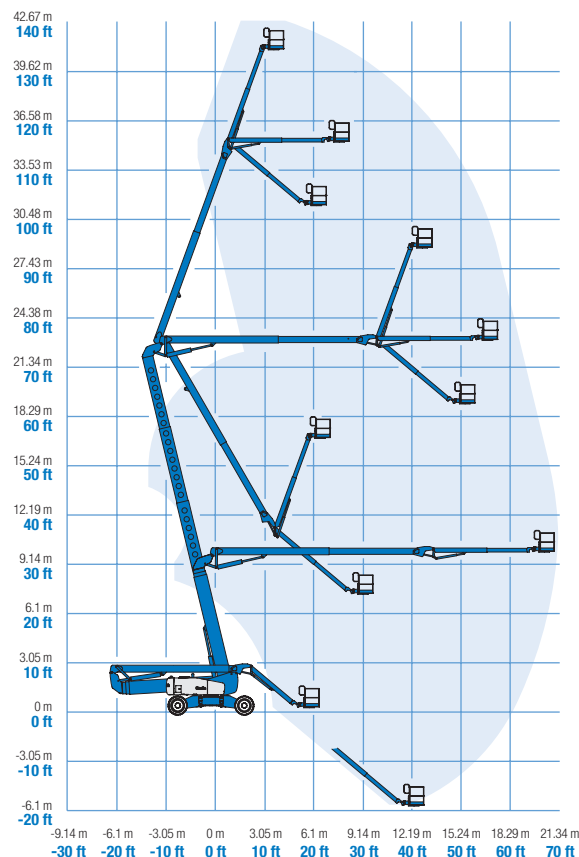
Weight****

CE	20,366 kg	44,900 lbs
CE Max	20,693 kg	45,620 lbs

Standards Compliance

EU Directives: 2006/42/EC - Machinery
(harmonized standard EN280:2001+A2:2009); 2004/108/EC (EMC); 2000/14/EC (Outdoor Noise)

Range Of Motion Z-135/70

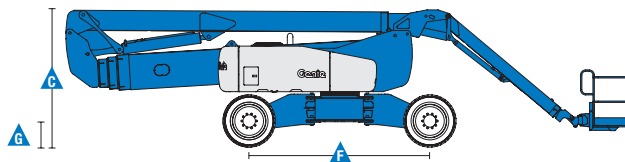
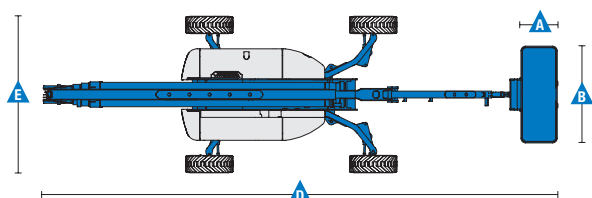


* The metric equivalent of working height adds 2 m to platform height. U.S. adds 6 ft to platform height.

** In lift mode (platform raised), the machine is designed to be operated on firm, level surfaces only.

*** Gradeability applies to driving on slopes. See operator's manual for details regarding slope ratings.

**** Weight will vary depending on options and/or country standards



Features

Standard Features	Easily Configured To Meet Your Needs	Options & Accessories
<p>Measurements</p> <ul style="list-style-type: none"> • 43.15 m (141 ft) working height • 21.26 m (69 ft 9 in) horizontal reach • 23.01 m (75 ft 6 in) up and over clearance • Up to 272 kg (600 lbs) lift capacity <p>Productivity</p> <ul style="list-style-type: none"> • Xchassis™ extendable axles • 3.66 to 6.10 m (12 to 20 ft) Jib-Extend™ • Self-levelling platform • Hydraulic platform rotation • Thumb rocker steering • Fully proportional joystick controls • On board full diagnostics and engine monitoring display • ALC 1000 electronic control system • Hydraulic oil cooler • Drive enable • AC power cord to platform • Horn • Hour meter • Tilt alarm • Descent, motion, & travel alarms • Flashing beacon • 360° continuous turntable rotation • Four wheel high angle steer • Four steering modes: front, rear, crab and coordinated • Four wheel brakes • Full-time positive traction 4WD • Adjustable foot switch timeout • Two speed wheel motors • Configurable controls to limit lift height to 27.74 m (91 ft) • Engine status display • Certified load sensor <p>Power</p> <ul style="list-style-type: none"> • 12 V DC auxiliary power • Engine protection package • Deutz intake air heater • Swing out engine tray 	<p>Platform Options</p> <ul style="list-style-type: none"> • Steel 2.44 m (8 ft) (standard) • Steel 1.83 m (6 ft) • Steel 2.44 m (8 ft) tri-entry <p>Jib</p> <ul style="list-style-type: none"> • 3.66 to 6.10 m (12 to 20 ft) Jib-Extend™ <p>Engine Options</p> <ul style="list-style-type: none"> • Deutz turbo diesel, 55 kW (74 hp) • Perkins turbo diesel, 62 kW (83 hp) <p>Drive/Steer</p> <ul style="list-style-type: none"> • 4 x 4 (standard) • 4 wheel steer (standard) <p>Tyre Options</p> <ul style="list-style-type: none"> • Extra-wide rough terrain foam-filled (standard) • Solid rough terrain tyres 	<p>Productivity Options</p> <ul style="list-style-type: none"> • Platform swing gate • Half mesh platform inserts with swing gate • Platform top auxiliary rail • Air line to platform • Power to platform (incl. plug, socket and ground fault interrupt leakage on request) • Work lights package (2 on chassis, 2 on platform) • Dual axis joystick steering • Weld leads to platform ⁽²⁾ • Biodegradable hydraulic oil ⁽²⁾ • Aircraft protection kit ^(1,2): platform foam padding and platform disable system • Hostile environment kit ⁽²⁾: cylinder bellows, boom wiper seals, platform and ground control box covers • Deluxe hostile environment kit ⁽²⁾ adds to basic kit center turntable shield, ring gear guard, tail pipe guard, engine cover flaps and air pre-cleaner • Track & Trace ⁽³⁾ (GPS unit providing machine location & operating information) • Lockable platform control box covers • Tool tray <p>Power Options</p> <ul style="list-style-type: none"> • AC generator packages (110V/60Hz, 3000W or 220V/50Hz, 3000W) • Deutz V-Belt Generator kit (110V/220V) ⁽¹⁾ • Diesel air intake pre-cleaner ⁽²⁾ • Diesel catalytic scrubber muffler ^(1,2) • Low temperature cut-out module • Engine heater option ⁽¹⁾ • Refinery kit with spark arrestor and electric or mechanical Chalmers valve ⁽¹⁾



⁽¹⁾ Available on selected models only. See your Genie representative for further information.

⁽²⁾ Factory-fit option only

⁽³⁾ Includes a first 2 years subscription

United Kingdom

The Maltings, Wharf Road, Grantham NG31 6BH, T: +44 800 988 3739 (toll free), Fax +44 (0)1476 584334, Email AWP-InfoEurope@terex.com

Visit www.genielift.co.uk/locations to view our global locations list.

Worldwide Manufacturing And Distribution

Australia • Brazil • Caribbean • Central America • China • France • Germany • Italy • Japan • Korea • Mexico • Russia • Southeast Asia • Spain • Sweden • United Arab Emirates • United Kingdom • United States

Effective Date: December, 2012. Product specifications and prices are subject to change without notice or obligation. The photographs and/or drawings in this document are for illustrative purposes only. Refer to the appropriate Operator's Manual for instructions on the proper use of this equipment. Failure to follow the appropriate Operator's Manual when using our equipment or to otherwise act irresponsibly may result in serious injury or death. The only warranty applicable to our equipment is the standard written warranty applicable to the particular product and sale and we make no other warranty, express or implied. Products and services listed may be trademarks, service marks or trade names of Terex Corporation and/or their subsidiaries in the USA and many other countries. Genie is a registered trademark of Terex South Dakota, Inc. © 2012 Terex Corporation.

