

Specifications

Model	Z-80/60	
Measurements	US	Metric
Working height maximum*	84 ft	25.77 m
Platform height maximum	78 ft	23.77 m
Horizontal reach maximum	60 ft	18.29 m
Up and over clearance maximum	29 ft	8.83 m
Below ground reach	15 ft 10 in	4.83 m
A Platform length - 8 ft / 6 ft	3ft/2ft 6in	0.91m/0.76m
B Platform width - 8 ft / 6 ft	8ft/6ft	2.44m/1.83m
C Height - stowed	9 ft 10 in	3.00 m
D Length - stowed	37 ft	11.27 m
E Length - transport	37 ft	11.27 m
F Width	8 ft 2 in	2.49 m
G Wheelbase	9 ft 4 in	2.85 m
H Ground clearance - center	12 in	0.30 m

Productivity

Lift capacity	500 lbs	227 kg
Platform rotation	160°	
Vertical jib rotation	135°	
Turntable rotation	360° continuous	
Turntable tailswing - riser up	3 ft 10 in	1.17 m
Turntable tailswing - riser down	7 ft 4 in	2.24 m
Drive speed - stowed	3.0 mph	4.83 km/h
Drive speed - raised**	0.68 mph	1.1 km/h
Lift speed to full height	76 sec	
Gradeability - 2WD - stowed***	30%	
Gradeability - 4WD - stowed***	45%	
Turning radius - 2WS inside	14 ft 6 in	4.42 m
Turning radius - 2WS outside	24 ft 6 in	7.47 m
Turning radius - 4WS inside	7 ft	2.13 m
Turning radius - 4WS outside	15 ft	4.57 m
Controls	12 V DC proportional	
Tires	18-625 NHS	

Power

Power source	74 hp (55.18 kW) Deutz diesel T4f TD2.9L4 58 hp (43.25 kW) Perkins diesel T4f 404D-22 70 hp (52.2 kW) GM gas/LPG 3.0L 74 hp (55.18 kW) Deutz diesel T4i TD2011L04i	
Auxiliary power unit	12 V DC	
Hydraulic tank capacity	45 gal	170 L
Fuel tank capacity – diesel machines	35 gal	132 L
Fuel tank capacity – gas/LPG machines	30 gal	114 L

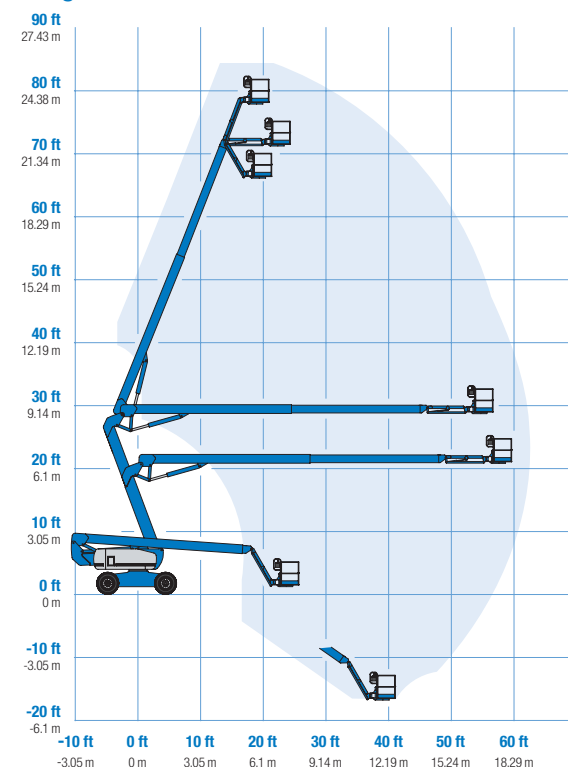
Weight****

2WS	35,900 lbs	16,284 kg
4WS	37,500 lbs	17,010 kg

Standards Compliance

«ANSI A92.5, CSA B354.4, EN 280, AS 1418.10

Range Of Motion Z-80/60

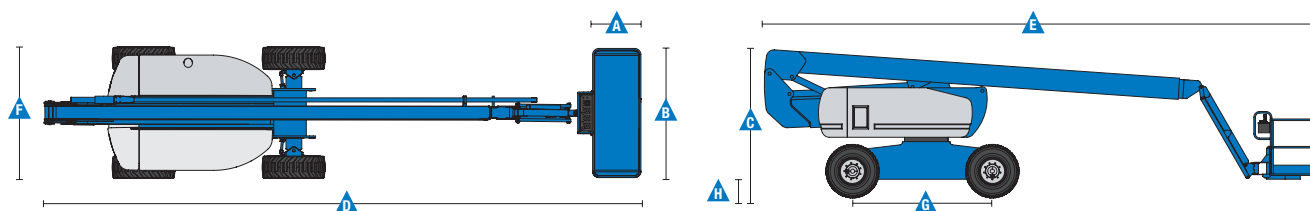


* The metric equivalent of working height adds 2 m to platform height.
U.S. adds 6 ft to platform height.

** In lift mode (platform raised), the machine is designed to operate on firm, level surfaces only.

*** Gradeability applies to driving on slopes. See operator's manual for details regarding slope ratings.

**** Weight will vary depending on options and/or country standards.



Features

Standard Features	Easily Configured To Meet Your Needs	Options & Accessories
Measurements <ul style="list-style-type: none"> • 84 ft (25.77 m) working height • 60 ft (18.29 m) horizontal reach • 29 ft (8.83 m) up and over clearance • Up to 500 lbs (227 kg) lift capacity Productivity <ul style="list-style-type: none"> • Self-leveling platform • 160° hydraulic platform rotation • Proportional joystick controls • Hydraulic oil cooler • Drive enable • AC power cord to platform • Horn • Hour meter • Tilt alarm • Descent alarm • 360° continuous turntable rotation • Positive traction drive • Two speed wheel motors • Four steering modes: front, rear, crab and coordinated (with 4WS option only) • Telematics ready connector • Entry toeboard • Lift Guard™ Contact Alarm Power <ul style="list-style-type: none"> • 12 V DC auxiliary power • Anti-restart engine protection • Auto engine fault shutdown • On board full diagnostic and engine monitoring display • Dual battery 	Platform Options <ul style="list-style-type: none"> • Steel 8 ft (2.44 m) tri entry with side swing gate (standard) • Steel 6 ft (1.83 m) dual entry with side swing gate Jib <ul style="list-style-type: none"> • 6 ft (1.83 m) jib boom Engine Options <ul style="list-style-type: none"> • 70 hp (52.2 kW) GM gas/LPG • 74 hp (55.18 kW) Deutz turbo diesel, T4f* • 58 hp (43.25 kW) Perkins turbo diesel, T4f* Drive/Steer Options <ul style="list-style-type: none"> • 4WD (standard) • 2WS (standard) • 4WS Axle <ul style="list-style-type: none"> • Active oscillation Tire Options <ul style="list-style-type: none"> • Rough terrain foam-filled (standard) • Rough terrain non-marking foam-filled • High flotation air-filled rough terrain 	Productivity Options <ul style="list-style-type: none"> • Half-mesh platform inserts • Platform top auxiliary rail • Welder package • Welder Ready package • Air line to platform • Specialty hydraulic oil (cold weather, fire resistant, or biodegradable) • Hostile environment kit • Deluxe hostile environment kit • Aircraft protection package (6 ft platform only) • Thumb rocker steer • Tool tray • Pipe cradles (pair) • Alarm package • Lockable platform control box covers • Work light package • Operator Protective Structure** • Fall Arrest Bar Power Options <ul style="list-style-type: none"> • AC generator packages (110V/60Hz - 220V/50Hz, 3000W) • Cold Weather Packages • Diesel catalytic scrubber muffler • LPG tank only, steel, 33.5 lbs (15.19 kg) capacity



* Also available as Tier 4i in limited regions
** Available through aftermarket parts only

Genie United States

6464 185th Ave. NE
Redmond, WA 98052
Telephone +1 (425) 881-1800
Toll Free in USA/Canada +1 (800)-536-1800
Fax +1 (425) 883-3475

Distributed By:

Effective Date: January, 2017. Product specifications and prices are subject to change without notice or obligation. The photographs and/or drawings in this document are for illustrative purposes only. Refer to the appropriate Operator's Manual for instructions on the proper use of this equipment. Failure to follow the appropriate Operator's Manual when using our equipment or to otherwise act irresponsibly may result in serious injury or death. The only warranty applicable to our equipment is the standard written warranty applicable to the particular product and sale and we make no other warranty, express or implied. Products and services listed may be trademarks, service marks or trade names of Terex Corporation and/or their subsidiaries in the USA and many other countries. Terex, Genie and AWP are registered trademarks of Terex Corporation or its subsidiaries. © 2017 Terex Corporation.