

Technical sheet :

MAN'GO 12



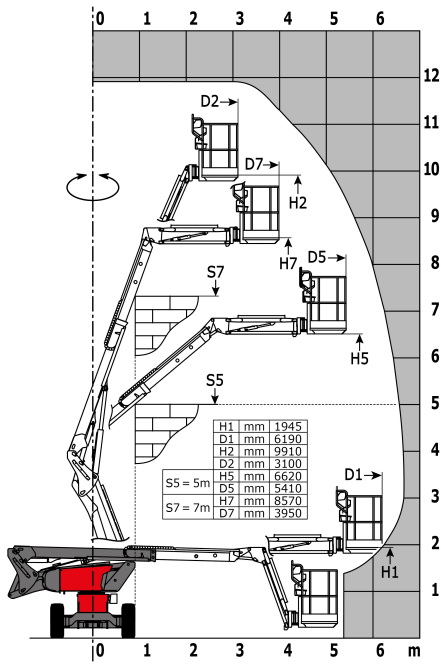
Capacities		Metric	Imperial
Working height	h21	11.91 m	39 ft 1 in
Platform height	h7	9.91 m	32 ft 6 in
Max. outreach	l4	6.69 m	21 ft 11 in
Overhang	l5	4.8 m	15 ft 9 in
Pendular arm rotation (bottom)		+70 °	+70 °
Platform capacity	Q	230 kg	507 lbs
Turret rotation		350 °	350 °
Platform rotation (right / left)		70 ° / 66 °	70 ° / 66 °
Number of people (inside / outside)		2 / 2	2 / 2
Weight and dimensions			
Platform weight*		4150 kg	9149 lbs
Platform dimensions (length x width)	lp / ep	1.5 m x 0.98 m	4 ft 11 in x 3 ft 3 in
Overall width	b1	1.8 m	5 ft 11 in
Overall length	l1	5.5 m	18 ft 1 in
Overall height	h17	2.02 m	6 ft 8 in
Overall length (stowed)	l9	4.5 m	14 ft 9 in
Overall height (stowed)	h18	2.49 m	8 ft 2 in
Floor height (access)	h20	0.3 m	1 ft
Jib length	l13	1.46 m	4 ft 9 in
Counterweight offset (turret at 90°)	a7	0.19 m	7 in
Internal turning radius (over tyres)	b13	1.71 m	5 ft 7 in
External turning radius	Wa3	4.11 m	13 ft 6 in
Ground clearance at centre of wheelbase	m2	0.32 m	1 ft 1 in
Wheelbase	y	2 m	6 ft 7 in
Performances			
Drive speed - stowed		5.2 km/h	3.2 mph
Drive speed - raised		1 km/h	0.6 mph
Gradeability		45 %	45 %
Permissible leveling		4 °	4 °
Wheels			
Tyres type		Solid Tyres Cured-On	Solid Tyres Cured-On
Drive wheels (front / rear)		2 / 2	2 / 2
Steering wheels (front / rear)		2 / 0	2 / 0
Braking wheels (front / rear)		2 / 2	2 / 2
Engine/Battery			
Engine brand / model / norm		Kubota - D1105-E2B - Stage V	Kubota - D1105-E2B - Stage V
I.C. Engine power rating / Power (kW)		26 Hp / 18.5 kW	26 Hp / 18.5 kW
Miscellaneous			
Ground Pressure		15 daN/cm²	15 daN/cm²
Hydraulic Pressure		398 Bar	27 PSI
Hydraulic tank capacity		60 l	13.20 gal
Fuel tank		53 l	11.66 gal
Noise to environment (LwA)		100 dB(A)	100 dB(A)
Vibration on hands/arms		< 2.5 m/s	< 8.2 ft/s
Daily consumption **		4.41 l	0.97 gal
Standards compliance			
This machine is in compliance with:		European directives: 2006/42/EC- Machinery (revised EN280:2013) - 2004/108/EC (EMC) - 2006/95/EC (Low voltage)	European directives: 2006/42/EC- Machinery (revised EN280:2013) - 2004/108/EC (EMC) - 2006/95/EC (Low voltage)

*Varies according to options and standards of the country to which the machine is delivered

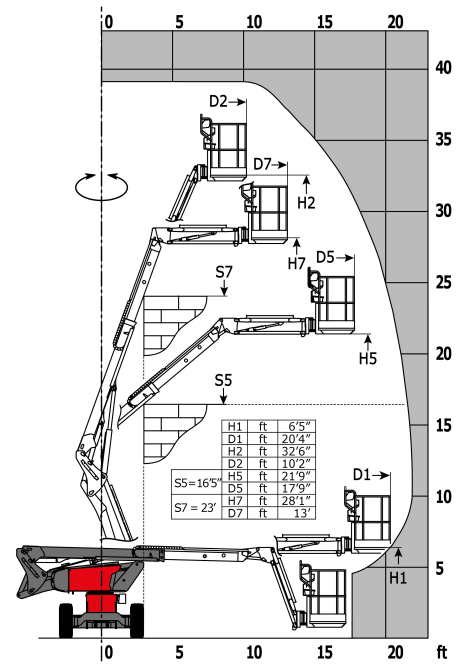
** According to "REDUCE cycle"

Load chart

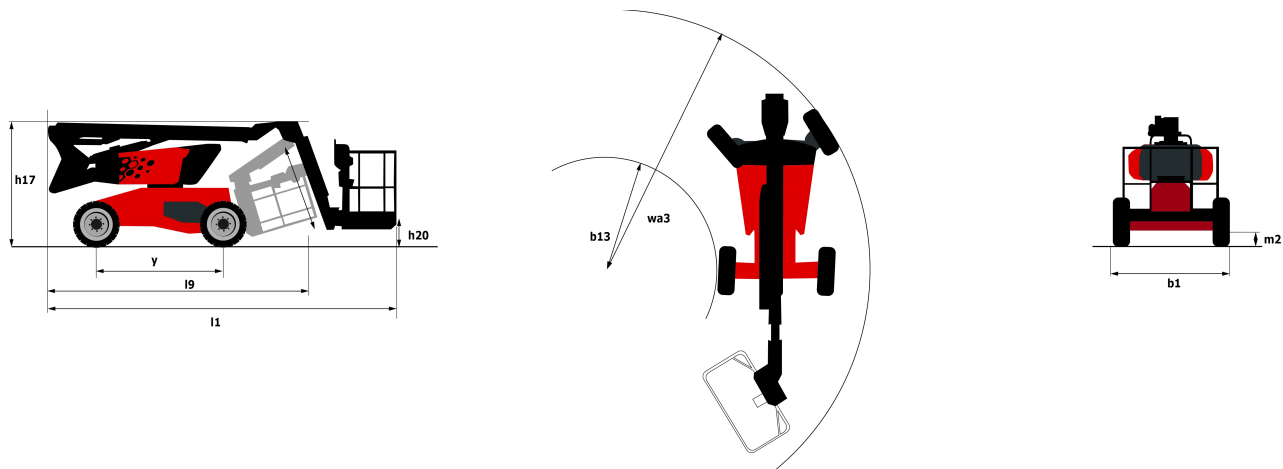
Load Chart for AWP Metric



Load Chart for AWP Imperial



Dimensional drawing



Equipment

Standard

- 3 Simultaneous movements
- Audible alarm and illuminated indicator lamp (leveling, overload, lowering)
- Basket 1,500 mm
- CAN bus technology
- Dead man pedal
- Differential locking
- Easy Manager
- Emergency stop button in platform and on frame
- Fuel gauge with low level indicator
- Horn in the platform
- Hour meter
- Leveling unlocking
- Management via engine speed bearing
- Manual emergency lowering
- Pendular arm
- Proportional controls
- Protective cover for control panel
- Quick access to components
- Simplified lift control system

Optional

- 110 or 230V plug with differential circuit breaker
- Air predisposition
- Battery cut-off
- Beep on every movement
- Beep upon travel
- Biodegradable oil
- Catalytic cleaner
- Coded anti-start
- Extreme cold oil
- Highly capacity battery
- Initial verification report before putting into service
- Lockable fuel cap
- Non-marking tyres
- Onboard generator (3,5 or 5 kW)

Optional

SMS : Safe Man System

Safety harness

Screen protection on the lower box control

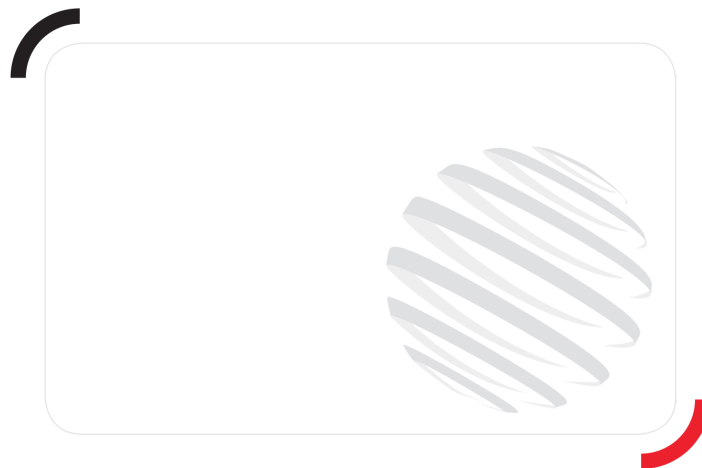
Spark arrester

Turret cover with key lock

Water heater

Water predisposition

Working light



Siège Social
430 rue de l'Aubinière - 44150 Ancenis Cedex - France
Tel: +33(0)2 40 09 10 11 - Fax: +33 (0)2 40 09 10 97
www.manitou.com



This brochure describes versions and configuration options for Manitou products which may be fitted with different equipment. The equipment described in this brochure may be standard, optional or not available depending on version. Manitou reserves the right to change the specifications shown and described at any time and without prior warning. The manufacturer is not liable for the specifications given. For more information, contact your Manitou dealer. Non-contractual document. Product descriptions may differ from actual products. List of specifications is not comprehensive. The logos and visual identity of the company are the property of Manitou and may not be used without authorisation. All rights reserved. The photos and diagrams contained in this brochure are provided for information only.

MANITOU BF SA - Limited company with board of directors - Share capital: 39,668,399 euros - 857 802 508
RCS Nantes