

Technical sheet :

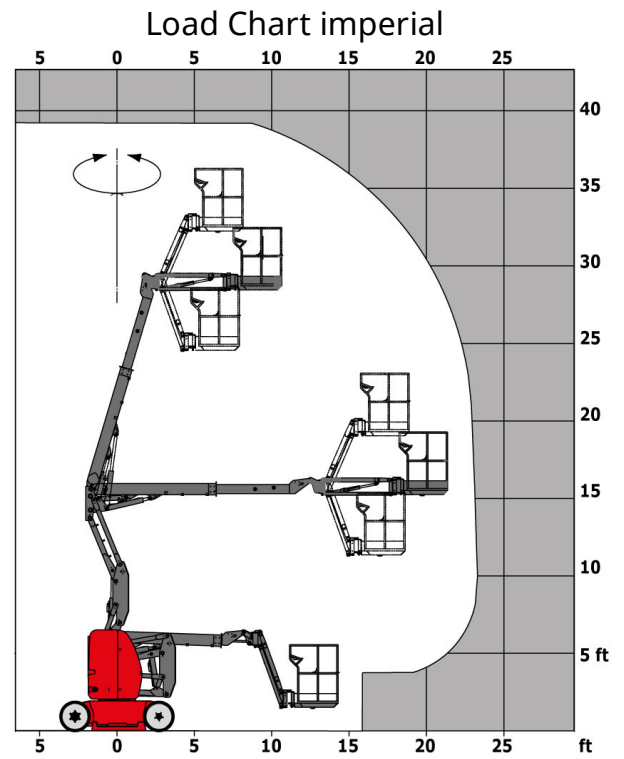
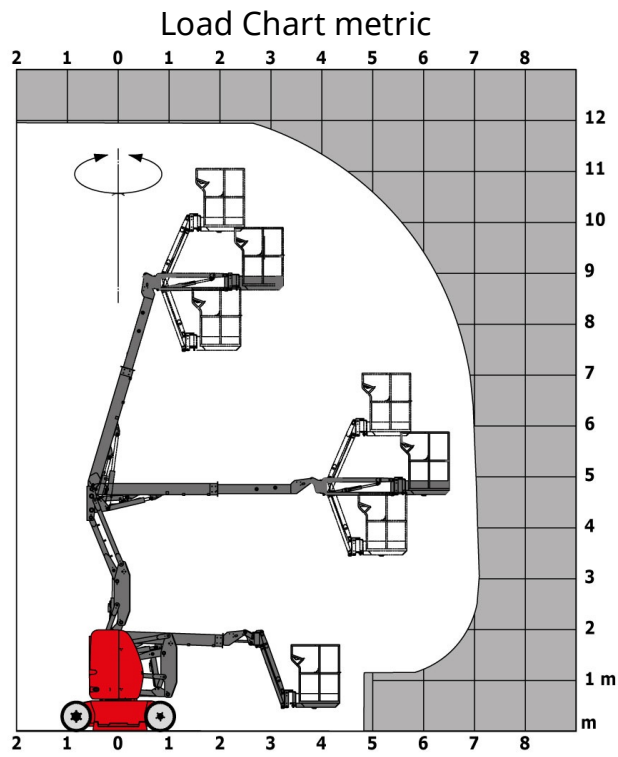
120 AETJ-C



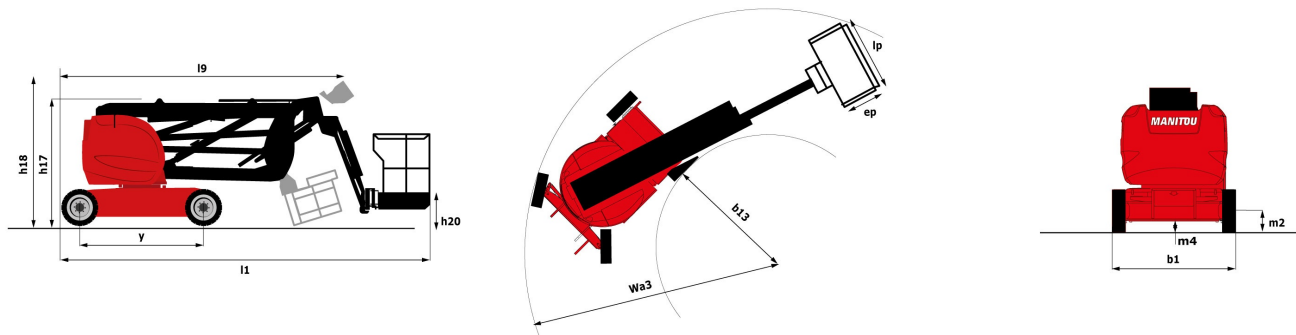
Capacities		Metric	Imperial
Working height	h21	11.95 m	39 ft 2 in
Platform height	h7	9.95 m	32 ft 8 in
Max. outreach	r1	7 m	23 ft
Overhang	h31	6.4 m	21 ft
Pendular arm rotation (top / bottom)		+70 ° / -70 °	+70 ° / -70 °
Platform capacity	Q	200 kg	441 lbs
Turret rotation		355 °	355 °
Platform rotation (right / left)		66 ° / 59 °	66 ° / 59 °
Number of people (inside / outside)		2 / 2	2 / 2
Weight and dimensions			
Platform weight*		6660 kg	14683 lbs
Platform dimensions (length x width)	lp / ep	1.2 m x 0.92 m	3 ft 11 in x 3 ft
Overall width	b1	1.2 m	3 ft 11 in
Overall length	l1	5.48 m	18 ft
Overall height	h17	1.99 m	6 ft 6 in
Overall length (stowed)	l9	3.74 m	12 ft 3 in
Overall height (stowed)	h18	2.16 m	7 ft 1 in
Floor height (access)	h20	0.4 m	1 ft 4 in
Jib length	l13	1.26 m	4 ft 2 in
Internal turning radius (over tyres)	b13	1.55 m	5 ft 1 in
External turning radius	Wa3	3.34 m	10 ft 11 in
Tailswing		0.23 m	9 in
Ground clearance	m4	0.1 m	4 in
Ground clearance with pothole guards deployed	m6	0.02 m	1 in
Wheelbase	y	1.65 m	5 ft 5 in
Performances			
Drive speed - stowed		6 km/h	3.7 mph
Drive speed - raised		0.6 km/h	0.4 mph
Gradeability		25 %	25 %
Permissible leveling		3 °	3 °
Wheels			
Tyres type		Solid non-marking tires	Solid non-marking tires
Dimensions of front wheels / rear wheels		0,6x0,19 - 0,6x0,19	0,6x0,19 - 0,6x0,19
Drive wheels (front / rear)		0 / 2	0 / 2
Steering wheels (front / rear)		2 / 0	2 / 0
Braking wheels (front / rear)		0 / 2	0 / 2
Engine/Battery			
Electric engine power rating		2 x 4.5 kW	2 x 4.5 kW
Electric Pump		3.7 kW	3.7 kW
Battery / Batteries capacity		48 V / 240 Ah	48 V / 240 Ah
Integrated charger (V / Ah)		48 V / 30 Ah	48 V / 30 Ah
Miscellaneous			
Number of cycles with STD Battery (HIRD)		60	60
Ground Pressure		20 daN/cm²	20 daN/cm²
Hydraulic Pressure		200 Bar	14 PSI
Hydraulic tank capacity		18 l	3.96 gal
Vibration on hands/arms		< 2.5 m/s	< 8.2 ft/s

*Varies according to options and standards of the country to which the machine is delivered

Load chart



Dimensional drawing



Equipment

Standard

230V Predisposition
 Audible alarm and illuminated indicator lamp (leveling, overload, lowering)
 Battery charge indicator lamp
 CAN bus technology
 Easy Manager
 Emergency stop button in platform and on frame
 Horn in the platform
 Hour meter
 Integrated diagnostic assistance
 Manual emergency lowering
 Multi-voltage integrated charger
 Negative-type braking on rear wheels
 Non-marking rubber tyres
 Pendular arm
 Platform with mesh floor
 Pothole protection with automatic operation
 Proportional controls
 Slings and securing rings
 Tool box in platform
 Traction battery

Optional

110 or 230V plug with differential circuit breaker
 3D
 Air predisposition
 Beep on every movement
 Beep upon travel
 Biodegradable oil
 Centralized recharging of battery
 Extreme cold oil
 Flashing Light
 Highly capacity battery
 Maintenance-free battery
 Personalized paintwork
 Protective cover for control panel

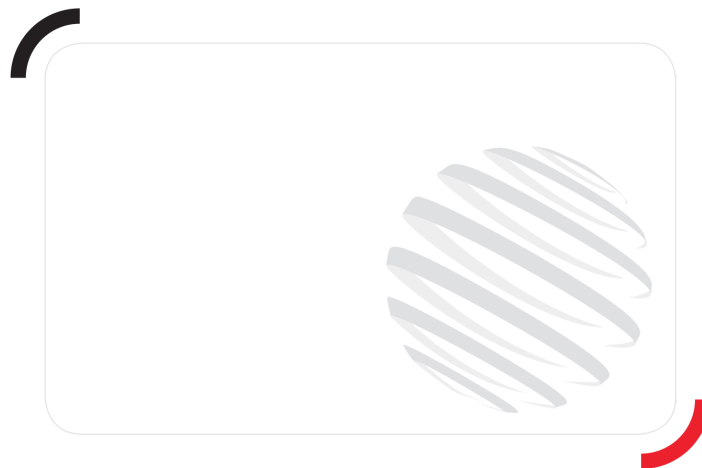
Optional

SMS : Safe Man System

Safety harness

Water predisposition

Working headlight in platform



Siège Social

430 rue de l'Aubinière - 44150 Ancenis Cedex - France

Tel: +33(0)2 40 09 10 11 - Fax: +33 (0)2 40 09 10 97

www.manitou.com



This brochure describes versions and configuration options for Manitou products which may be fitted with different equipment. The equipment described in this brochure may be standard, optional or not available depending on version. Manitou reserves the right to change the specifications shown and described at any time and without prior warning. The manufacturer is not liable for the specifications given. For more information, contact your Manitou dealer. Non-contractual document. Product descriptions may differ from actual products. List of specifications is not comprehensive. The logos and visual identity of the company are the property of Manitou and may not be used without authorisation. All rights reserved. The photos and diagrams contained in this brochure are provided for information only.

MANITOU BF SA - Limited company with board of directors - Share capital: 39,668,399 euros - 857 802 508
RCS Nantes